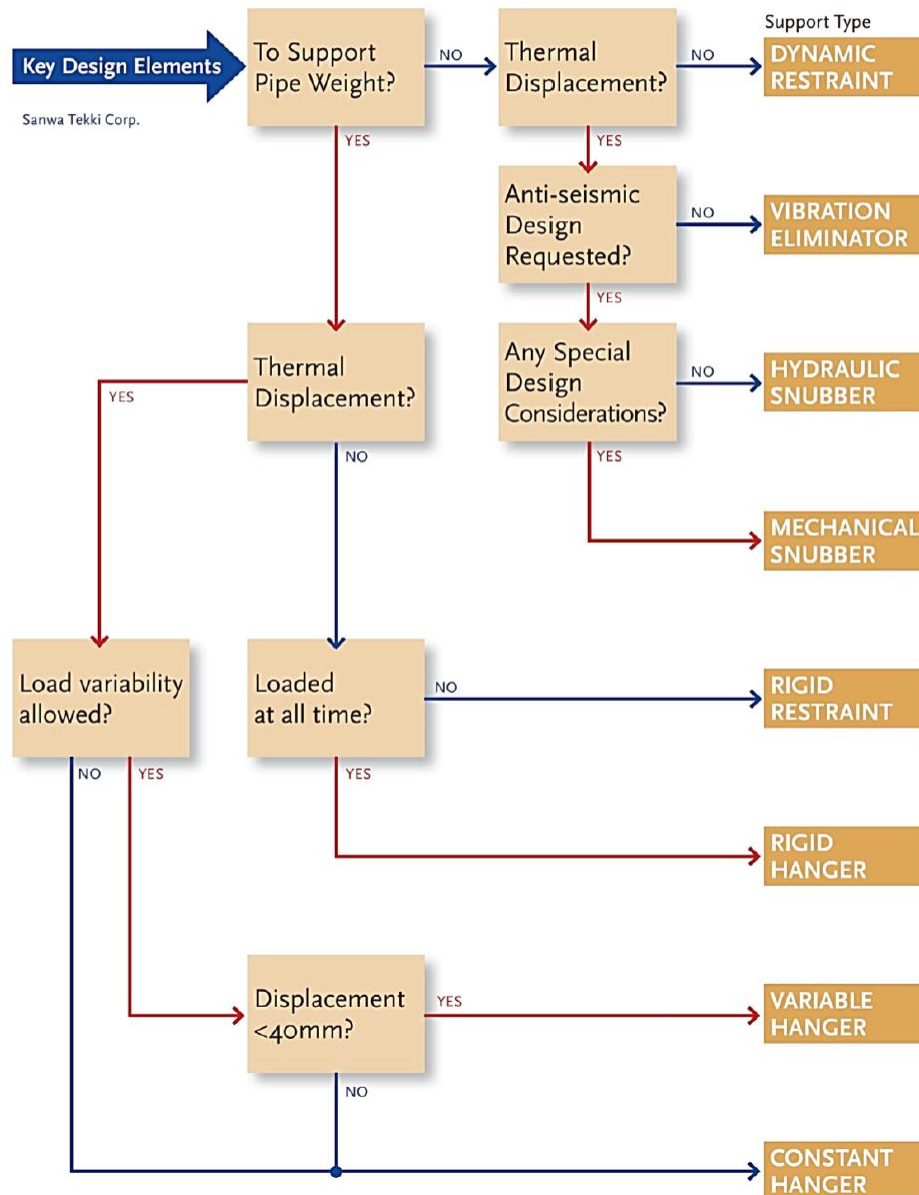


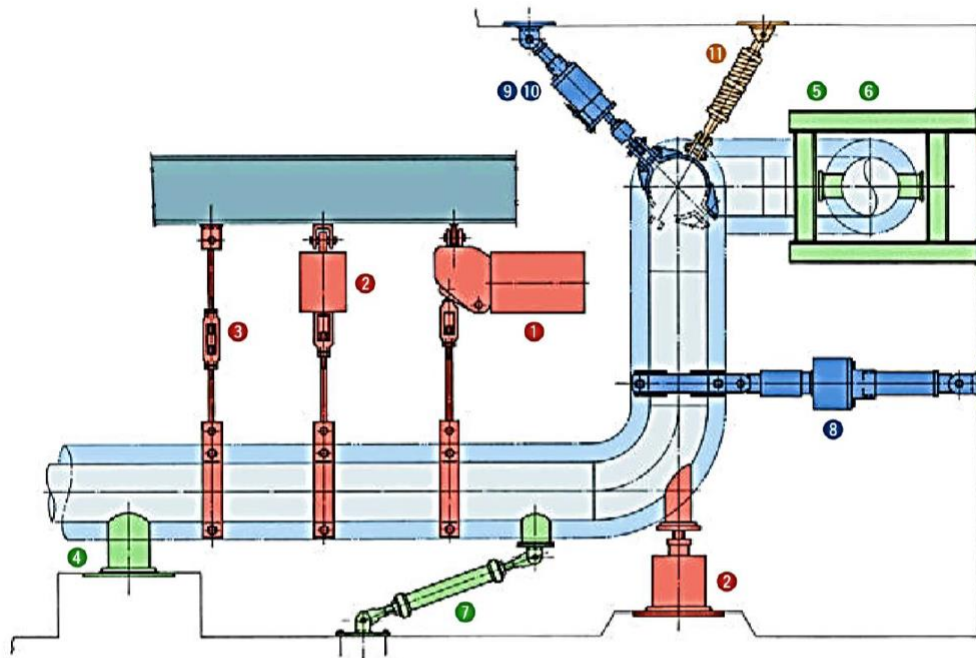
Diagram of Pipe Support Selection



Mechanical Snubbers, Constant Hangers & Hydraulic Snubbers



Typical Pipe Support Components



Group	Type	Applications
Hangers and Supports	① Constant Spring Hanger	To support the weight of pipe having relatively a large amount of thermal displacement (travel).
	② Variable Spring Hanger	To support the weight of pipe having relatively a small amount of thermal displacement (travel).
	③ Rigid Hanger	To support the weight of pipe having no thermal displacement (travel).
Restraints	④ Anchor	To restrain a pipe movement in all directions.
	⑤ Stop	To restrain a pipe movement in one designated direction.
	⑥ Guide	To allow a displacement in one designated direction.
	⑦ Rod Restraint	To restrain a displacement in any direction.
Snubbers	⑧ Mechanical Snubber	To restrain a dynamic movement mechanically while allowing a thermal displacement.
	⑨ Hydraulic Snubber	To restrain a dynamic movement hydraulically while allowing a thermal displacement.
	⑩ Hydraulic Damper	To absorb a shock load hydraulically.
Braces	⑪ Vibration Eliminator	To reduce vibrations.

